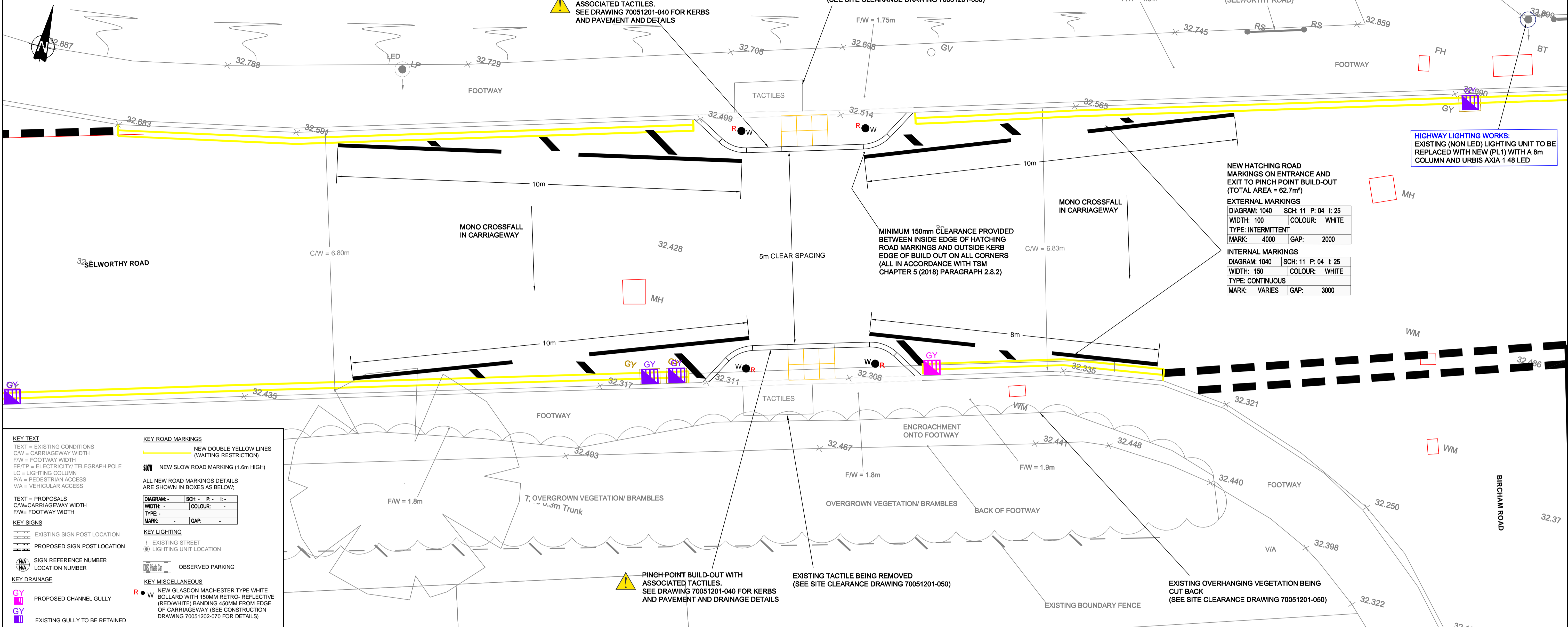


INSET A - PINCH POINT BUILD OUT NARROWING AT EXISTING CROSSING (SCALE - 1:50)



KEY TEXT

TEXT = EXISTING CONDITIONS
 C/W = CARRIAGEWAY WIDTH
 F/W = FOOTWAY WIDTH
 EP/TP = ELECTRICITY/TELEGRAPH POLE
 LC = LIGHTING COLUMN
 P/A = PEDESTRIAN ACCESS
 V/A = VEHICULAR ACCESS

KEY SIGNS

EXISTING SIGN POST LOCATION
 PROPOSED SIGN POST LOCATION
 SIGN REFERENCE NUMBER
 LOCATION NUMBER

KEY DRAINAGE

PROPOSED CHANNEL GULLY
 EXISTING GULLY TO BE RETAINED

KEY ROAD MARKINGS

NEW DOUBLE YELLOW LINES (WAITING RESTRICTION)
 NEW SLOW ROAD MARKING (1.6m HIGH)
 ALL NEW ROAD MARKINGS DETAILS ARE SHOWN IN BOXES AS BELOW:

DIAGRAM	SCH	P	E
WIDTH	COLOUR		
TYPE			
MARK	GAP		

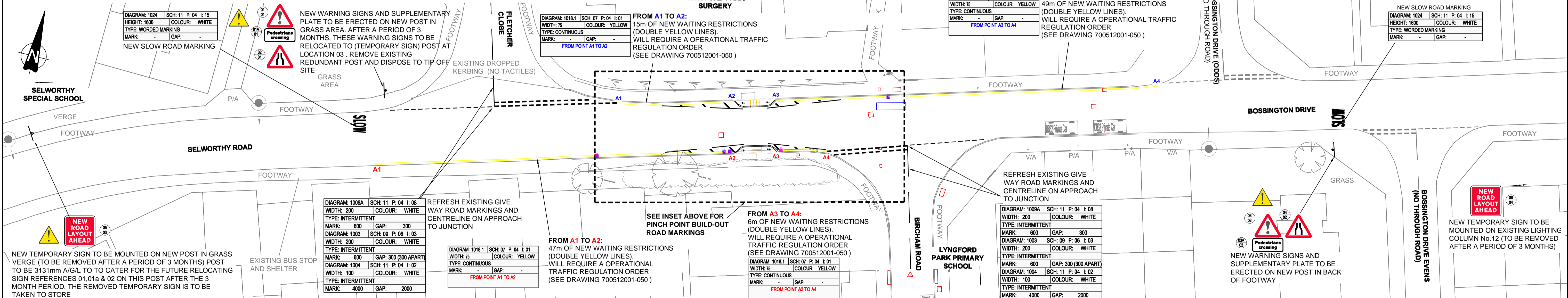
KEY LIGHTING

EXISTING STREET LIGHTING UNIT LOCATION
 OBSERVED PARKING

KEY MISCELLANEOUS

NEW GLASDON MACHESTER TYPE WHITE BOLLARD WITH 150MM RETRO-REFLECTIVE (RED/WHITE) BANDING 450MM FROM EDGE OF CARRIAGEWAY (SEE CONSTRUCTION DRAWING 70051202-070 FOR DETAILS)

WAITING RESTRICTIONS AND ASSOCIATED WARNING SIGNS RELATING TO NEW PINCH POINT BUILD OUT CROSSING (SCALE - 1:250)



KEY TO HEALTH AND SAFETY SYMBOLS

INDICATES A RESIDUAL RISK REQUIRING A PROHIBITIVE ACTION.
 INDICATES A RESIDUAL RISK AS A WARNING.
 INDICATES A RESIDUAL RISK REQUIRING A COMPULSORY ACTION.
 INDICATES A RESIDUAL RISK FOR INFORMATION.

- TO BE READ IN CONJUNCTION WITH THE FOLLOWING:
- KERBS AND PAVEMENT DRAWING - 70051201-040
 - SITE CLEARANCE DRAWING - 70051201-050
 - EXISTING STATUTORY UNDERTAKERS PLAN - 70051201-060
 - CONSTRUCTION DETAILS - 70051201-070
 - DOUBLE YELLOW WAITING RESTRICTION PLAN 70051202-080

Rev	Description	By	Date	Chkd	Auth
-	ISSUE TO RSA 1/2	JMP	08/19	RL	SW
A	ISSUE FOR CONSTRUCTION	JMP	11/19	MYu	SW

wsp
 Exchange House
 12-14 The Crescent
 Taunton
 TA1 4EB, UK
 www.wsp.com

SOMERSET County Council
Somerset County Council
 Traffic & Transport Development Group
 County Hall
 Taunton
 Somerset
 TA1 4DY
 TEL: (0300) 123 2224
 www.somerset.gov.uk

Client	SOMERSET COUNTY COUNCIL	Title	TRAFFIC SIGNS AND ROAD MARKINGS
Project	TI004323 BOSSINGTON DRIVE PEDESTRIAN CROSSING	File Name	70051201-030 Rev A (signs & road markings)
Original Scale	AS SHOWN	Page Size	A1
Drawn	JMP	Checked	RL
Authorised	SW	Date	07/19
Status	DD	Date	08/19
Drawing Number	70051201-030	Rev	A