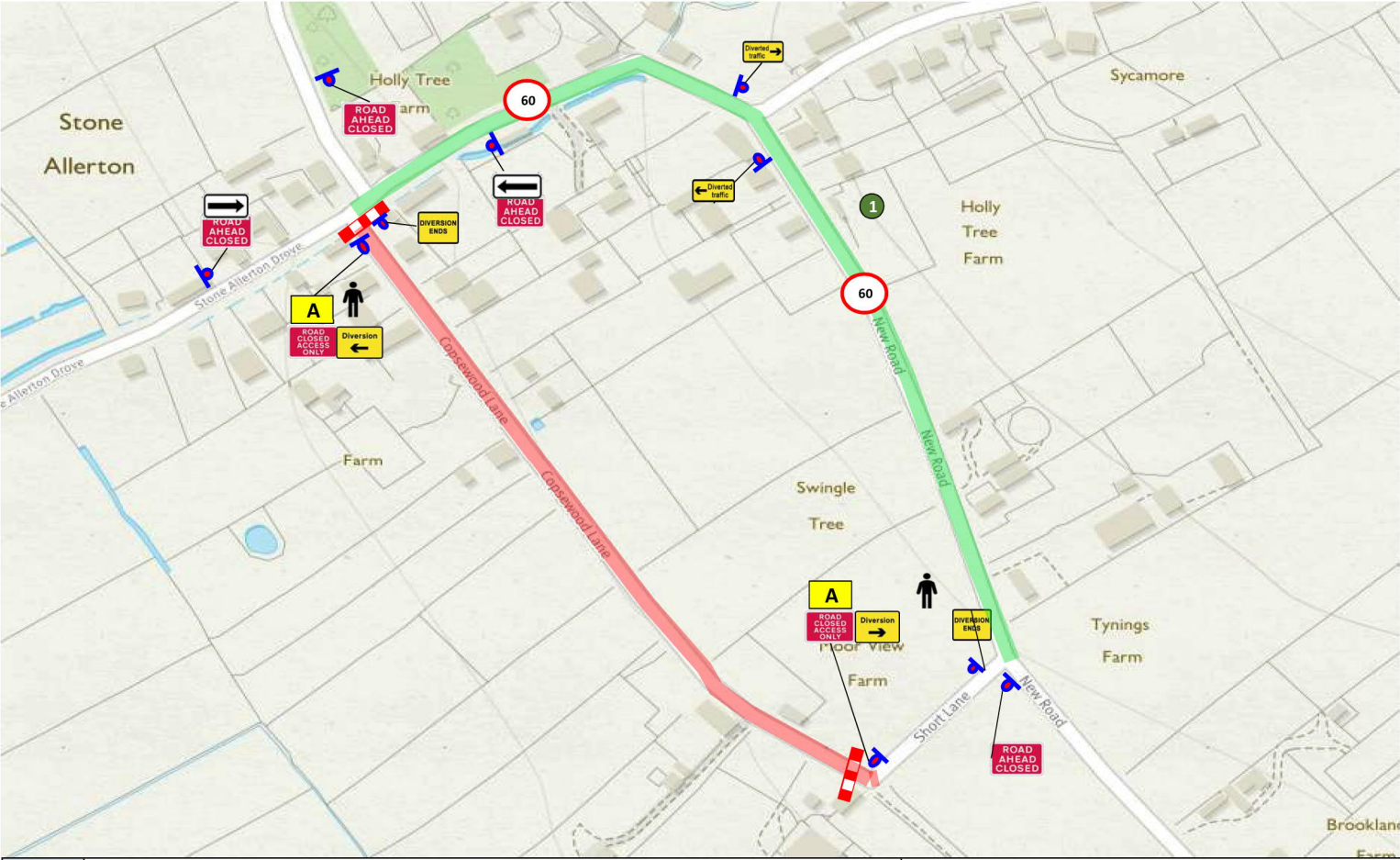


Title Weare - TM33 (v2)



Street	Copsewood Lane		
Town	Stone Allerton		
USRN	34003402	Post Code	BS26 2NR
			Co-ordinates
Start	Junction of Stone Allerton Drive		ST 40183 50873
End	Junction of Short Lane		ST4010250810
Type of restriction requested	Road closure	Duration	Under 5 days
Can pedestrian access through the site be maintained	YES		
Can access for cyclists and equestrians be maintained through the site?	YES		
Can emergency services gain access	YES		
Can public / school busses gain access through the site	NO		




# First Call

## Traffic Management



Businesses & Public Areas			
1	Holly Tree Farm		
2			
3			
4			
5			
6			
7			
8			

	2		1
			1
	5		1
			1
			1
	2		1
	2		
	2		2

KEY	
	Access to residential frontages
	Access to residential frontages and businesses
	Manned Closure
	Proposed Closure
	Proposed Diversion Route

Diversion Length	0.56	KM
Diversion Routes / Comments		
Access to be maintained at all times.		
Drawing number	Weare - TM33	
Date drawn	09/06/2018	
Drawn by	JD	
Approved by	GW	

